

Traverse

Creek

Watershed

COMMON MACROINVERTEBRATES

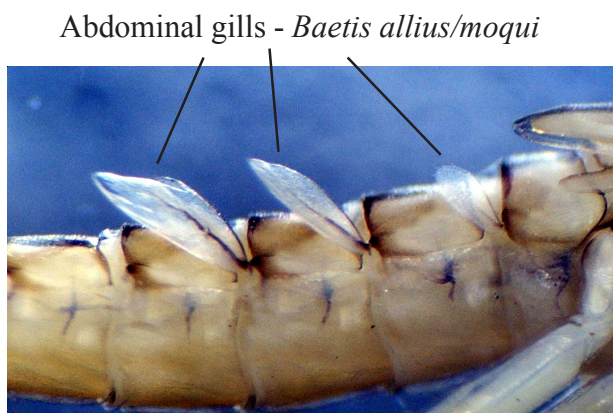
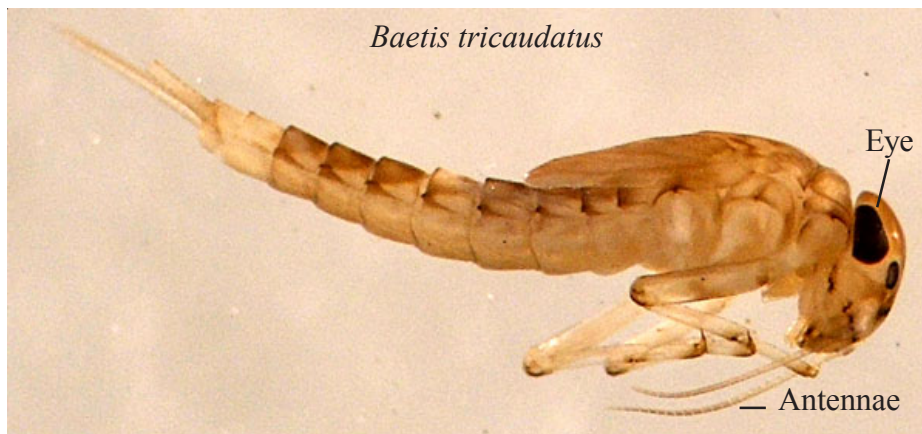
Order: Ephemeroptera

Family: Baetidae

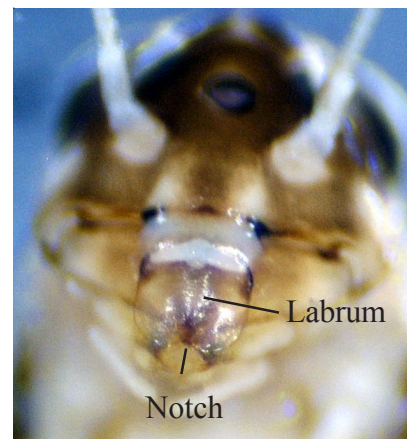
Characteristics

1) Body with a streamlined look, often with a narrow abdomen 2) Tends to preserve in a “hunchback” shape 3) Head attaches at right angles to the body and eyes appear to be looking to the sides 4) Antennae usually 2-3 times the width of the head, but may be broken off 5) Upper lip (labrum) with a median notch, absent in one genus 6) One claw per leg, all legs of a similar size and shape on any individual 7) Abdominal gills present, but vary in size, shape and number within family 7) Two or three tails present

Illustrations



Head - *Cleodes excogitatus*



Note: Baetidae is often the most common Ephemeroptera in benthic macroinvertebrate samples, and *Baetis tricaudatus* is the most common species of Baetidae in the Sierra foothills area. This family may be confused with the similar looking Amelitidae.