

Traverse

Creek

Watershed

COMMON MACROINVERTEBRATES

Order: Trichoptera

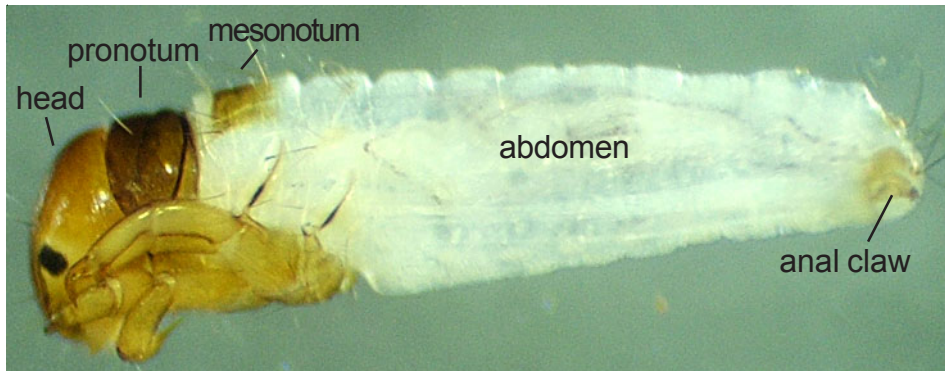
Family: Brachycentridae

Characteristics

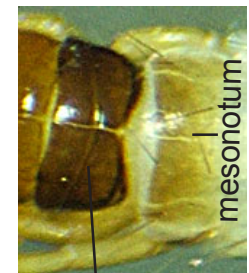
1) Body typically preserves straight 2) Dorsal and lateral humps absent 3) Groove across pronotum (first thoracic segment) 4) Hard parts of mesonotum (second thoracic segment) divided 5) Small anal claw on last abdominal segment 6) Cases straight or curved and constructed of sand and/or plant material; classic Brachycentridae cases are four sided but these don't occur in our samples

Illustrations and Notes

*Amiocentrus aspilus*



Dorsal view of pronotum and mesonotum



Typical cases:

*Amiocentrus aspilus*



*Micrasema* sp.



*Micrasema* sp.



Lateral view of pronotum and mesonotum

Note: Brachycentrids are usually small members of the Trichoptera order.