

Traverse

Creek

Watershed

COMMON MACROINVERTEBRATES

**Order:** Diptera

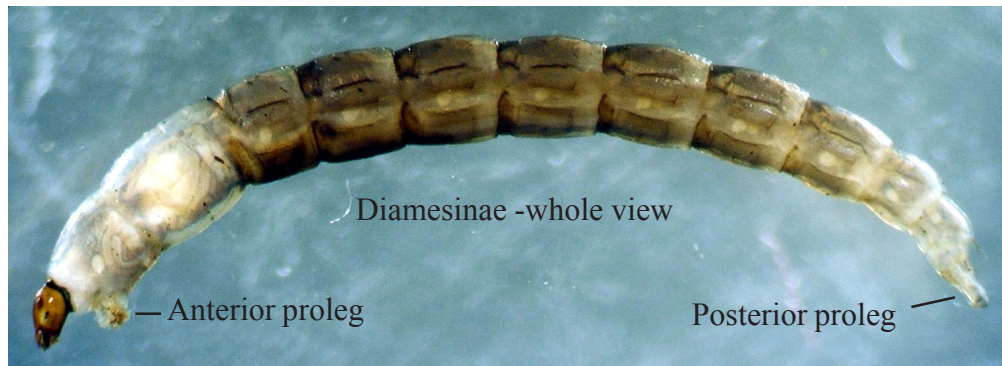
**Family:** Chironomidae

**Characteristics**

**Larvae:** 1) Body usually elongate, slightly curved, with distinct segments of similar size and shape 2) Distinctive capsule-like head, variations in shape often associated with subfamily 3) Two pairs prolegs - one pair on first segment, just behind the head; second pair on last abdominal segment 4) Posterior end often with lobes or tufts of hair

**Pupae:** 1) "Hunchback" with bulbous head 2) legs folded under wings (no photo)

**Illustrations**



Tanypodinae showing head and anterior proleg



Diamesinae showing head and anterior proleg



Tanytarsini head with long antennae

**Note:** Chironomidae and Simuliidae are the most common Diptera found in Traverse Creek.