

Traverse

Creek

Watershed

COMMON MACROINVERTEBRATES

Order: Coleoptera

Family: Elmidae

Characteristics

Larvae: 1) Body elongate, completely sclerotized (hardened), dark brown or red-brown and often pre-preserved curved 2) Antennae shorter than head 3) Three pairs legs, 4 segmented with 1 claw 4) Abdomen with 9 segments the last of which has a hinged operculum (hinged opening) on the ventral (under) side enclosing gills and hooks

Adults: 1) Dark brown, red or black, often hard to see characters because of dark color 2) Antennae long and slender, may have a club on the end, sometimes bent and pulled in so that they are hard to see 3) Abdomen covered by elytra (hard wing covers), with indentations in parallel rows 4) bases of hind legs not dividing 1st abdominal segment 5) Five tarsal segments per leg, last segment enlarged with 2 claws

Illustrations

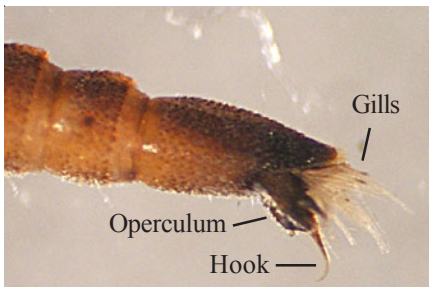


Zaitzevia sp. larva side view

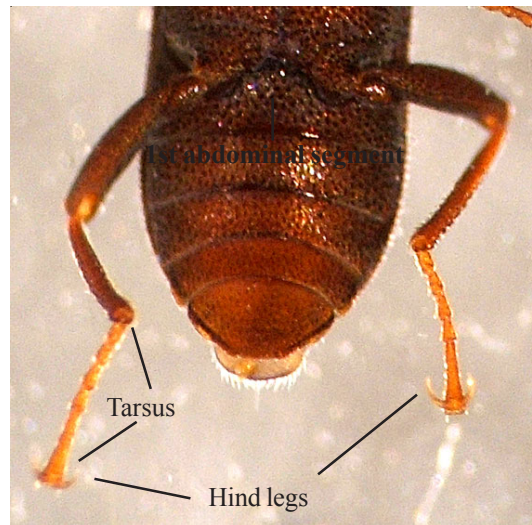
Microcyllopus sp. larva antenna



Larva - 4 segmented leg



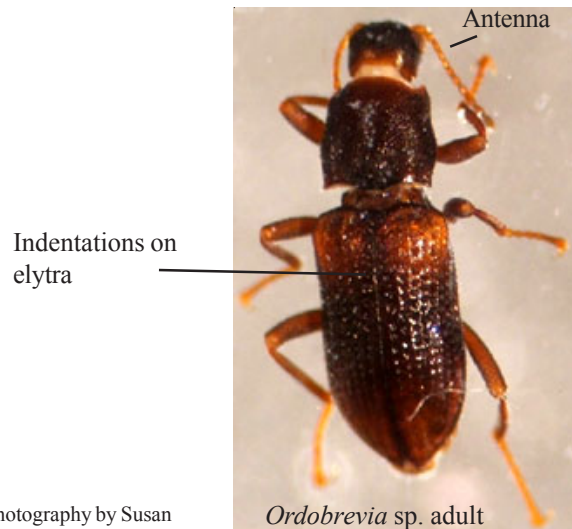
Gills  
Operculum  
Hook



1st abdominal segment

Tarsus

Hind legs



Indentations on elytra

Antenna

Ordobrevia sp. adult



Club on end of Zaitzevia sp. adult antenna