

Traverse

Creek

Watershed

COMMON MACROINVERTEBRATES

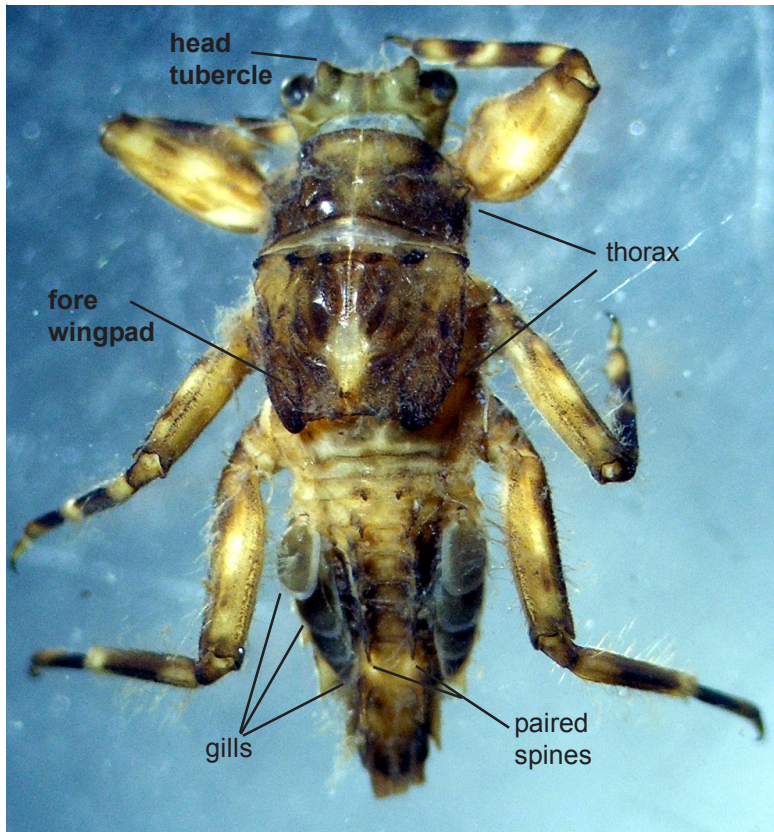
Order: Ephemeroptera

Family: Ephemerellidae

Characteristics

- 1) Many shapes and sizes, typically robust
- 2) Gills leaf-like, on flattened side extensions of body
- 3) Gills rudimentary or absent on first abdominal segment, completely absent from abdominal segment 2, and present on abdominal segment 3-7 or 4-7
- 4) Paired dorsal spines or tubercles often present on abdomen, thorax and/or head
- 5) Abdominal segments pointed on posterior corners

Illustrations



Notes: The most reliable way to separate Ephemerellidae from other Ephemeroptera families is the lack of gills on the second abdominal segment. They sometimes have large operculate (covering) gills on the 4th abdominal segment. These may be confused with Leptohiphidae or Caenidae which have large operculate gills on the 2nd abdominal segments. Always count segments! Look for paired spines or tubercles on the head, thorax or abdomen.