

Traverse

Creek

Watershed

COMMON MACROINVERTEBRATES

Order: Odonata

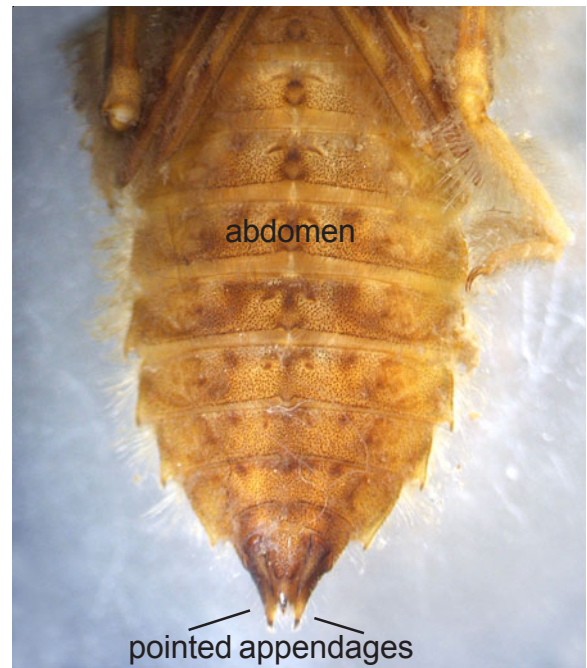
Family: Gomphidae

Characteristics

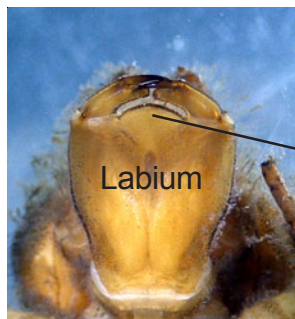
Suborder Anisoptera (dragonflies): 1) Larva stout, head usually narrower than abdomen 2) Tip of abdomen with 5 short pointed appendages, making a sort of “pyramid”

Family Gomphidae: 1) Body shape robust, broad and flattened 2) Head wedge-shaped with large eyes 3) Antennae with 4 thick segments, the 4th one very tiny and often hard to see 4) Labium (lower lip) flattened, not spoon-shaped as in some families of Odonata; ligula without a median cleft

Illustrations



Ventral view of mouthparts



Note: Gomphidae is the most common family of Odonata in our samples