

Traverse

Creek

Watershed

COMMON MACROINVERTEBRATES

Order: Ephemeroptera

Family: Heptageniidae

Characteristics

- 1) Body and head flattened
- 2) Head appears wider than long
- 3) Mouthparts usually not visible from dorsal view
- 4) Tibiae and tarsi of legs straight
- 5) Claws shorter than tarsi
- 6) Thin, flat gills present on abdominal segments 1-7 (these are often missing or only fine filaments can be seen)
- 7) Two or three tails present

Illustrations

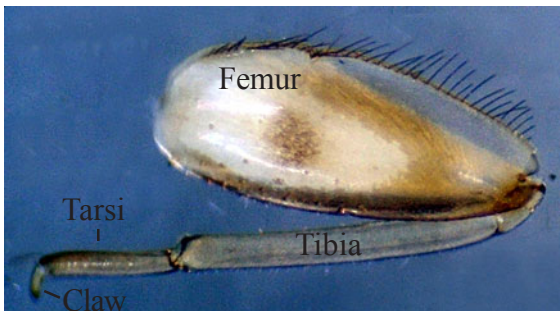
Rithrogena sp.



Ironodes sp. head



Cynigmula sp. head with mouth-part visible from dorsal view



Leg of *Rithrogena* sp.

Note: This family is fragile and often appears in samples without legs, tails or gills, but can always be identified to family by its head.