

Traverse

Creek

Watershed

COMMON MACROINVERTEBRATES

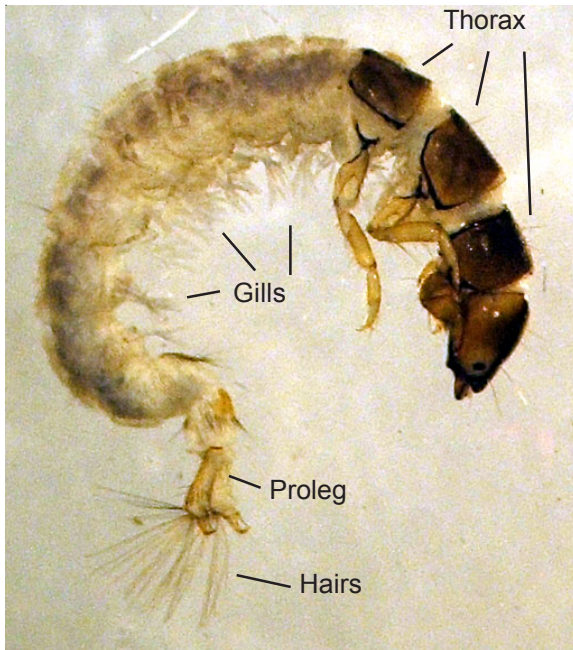
Order: Trichoptera

Family: Hydropsychidae

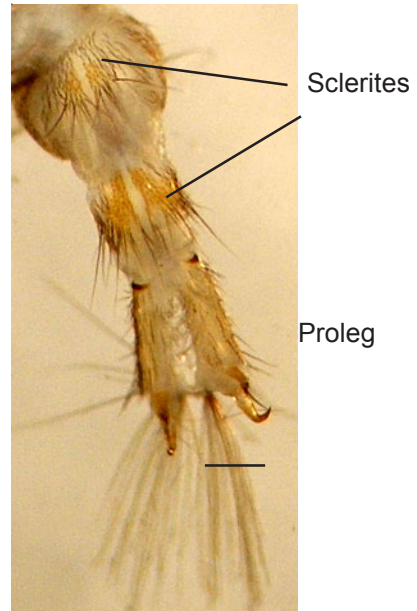
Characteristics

1) Body usually preserves curled 2) Hard plates on all 3 thoracic segments 3) Lobed edges on middle segment of thorax 4) Abdominal segments with gills 5) Long hairs at the end of each proleg 6) Darkened sclerites (hardened patches) with hairs on underside of the last 2 segments  
Subfamily Arctopsychinae: separated from other Hydropsychidae by the apotome, a V or U - shaped plate, on the ventral side of the head.

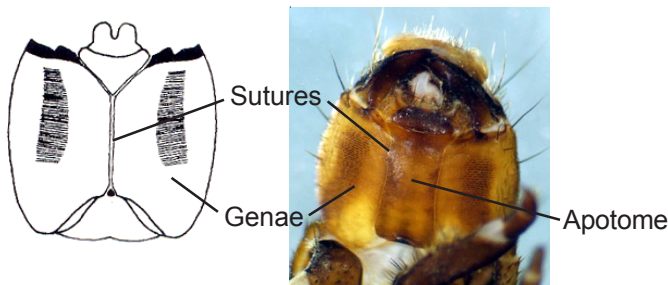
Illustrations



Last abdominal segments and proleg



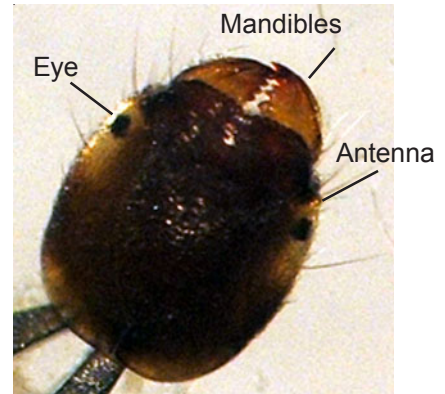
Underside of head



Typical Hydropsychidae (from Merritt and Cummins, 1996)

Subfamily Arctopsychinae

Head



Note: The subfamily Arctopsychinae are often separated out from the Hydropsychidae for family level identification because they have a much lower tolerance value.