

Traverse

Creek

Watershed

COMMON MACROINVERTEBRATES

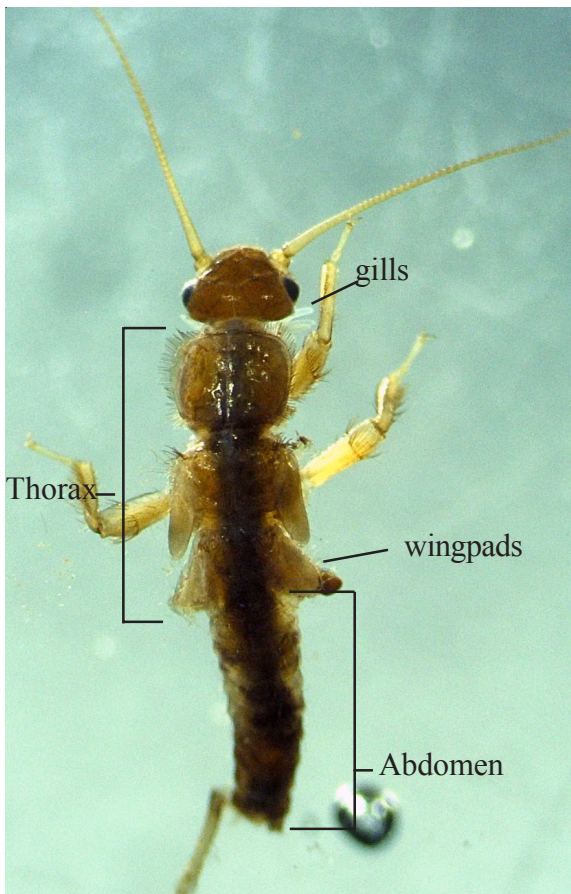
**Order:** Plecoptera

**Family:** Nemouridae

**Characteristics**

- 1) Short, stocky body
- 2) Mouthparts with equal glossa and paraglossa
- 3) Single or branched gills on ventral (bottom) side between head and thorax (some genera do not have this character or may also have gills just below the mouthparts)
- 4) Wingpads divergent (only seen in mature instars)
- 5) Hind legs extend past tip of abdomen
- 6) First tarsal segment longer than second (this is the defining character when no gills are present)
- 7) Abdomen short, equal to or shorter than thorax

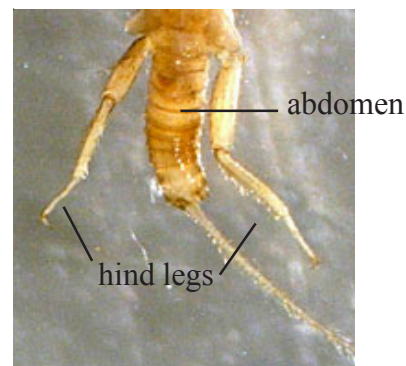
**Illustrations**



*Zapada cintipes*  
dorsal view



Head - ventral view



Posterior end - dorsal view