

Traverse

Creek

Watershed

COMMON MACROINVERTEBRATES

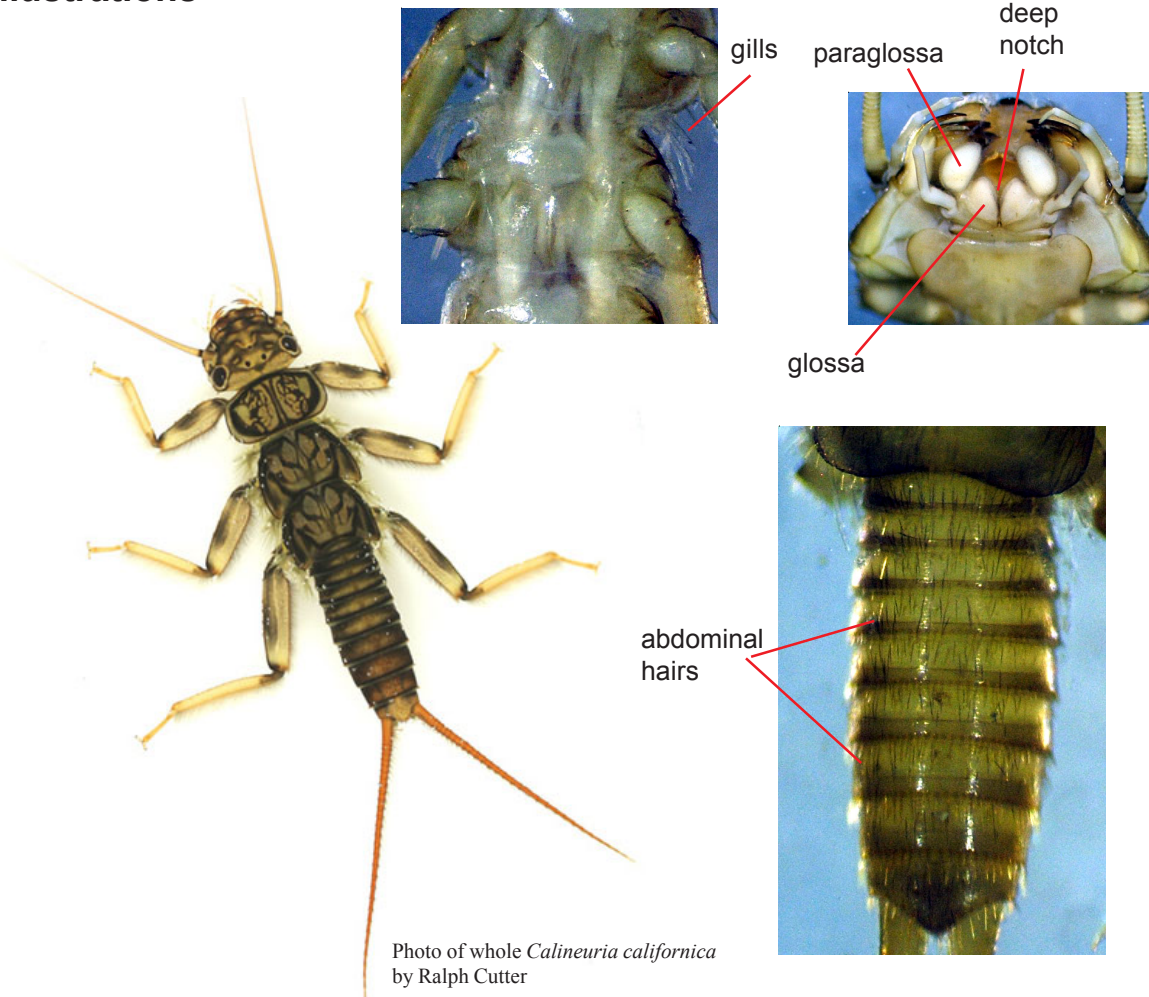
Order: Plecoptera

Family: Perlidae

Characteristics

1) Usually between 8-30 mm in length 2) Body somewhat flat, with brownish or yellowish markings 3) Mouthparts have one deep notch; paraglossae are rounded and larger than glossae 4) Branched gills found at the base of legs on all thoracic segments; anal gills may also be present

Illustrations



Notes: Perlidae are usually separated from the Perlodidae by the gill tufts at the base of the legs in the former family. In early instars, however, gills are often not yet present. In these cases, Perlodidae may be recognized by the more distinctly patterned juveniles, while the abdomen of Perlidae has bristly hairs and the tips of paraglossae are more rounded than those of the Perlodidae.

Photography by Susan McCormick