

Traverse

Creek

Watershed

COMMON MACROINVERTEBRATES

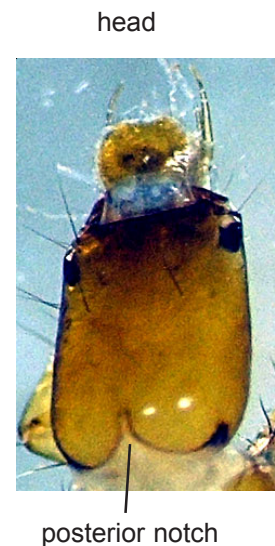
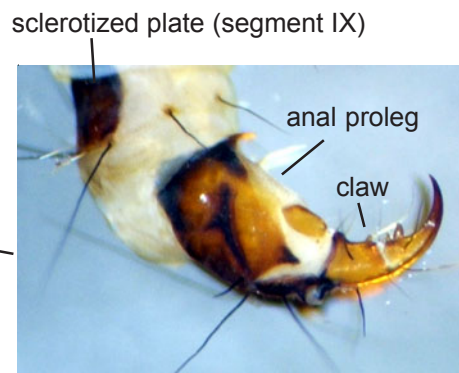
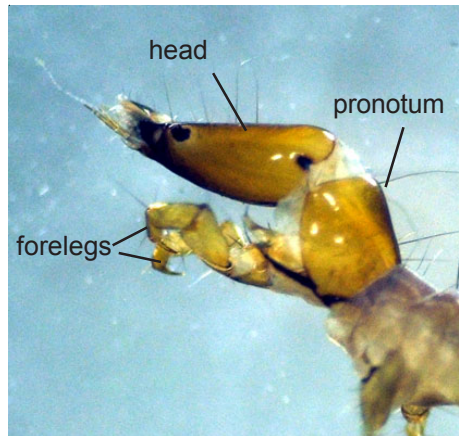
Order: Trichoptera

Family: Rhyacophilidae

Characteristics

- 1) Head usually elongated and dorsally flat, sometimes with a pigment pattern but no freckles
- 2) Posterior margin of head with a median notch
- 3) Mesonotum (middle thoracic segment) and metanotum (third thoracic segment) without hardened plates
- 4) Gills present or absent
- 5) Last abdominal segment (segment IX) with a hardened, sclerotized plate on the dorsum, often hard to see, especially in smaller specimens
- 6) Anal prolegs elongate, with one large claw at tip
- 7) Free living, no case

Illustrations



Notes: Rhyacophilidae is superficially very similar to Polycentropodidae and Philopotamidae. See comparison sheet to separate these families.