

Traverse

Creek

Watershed

COMMON MACROINVERTEBRATES

Order: Diptera

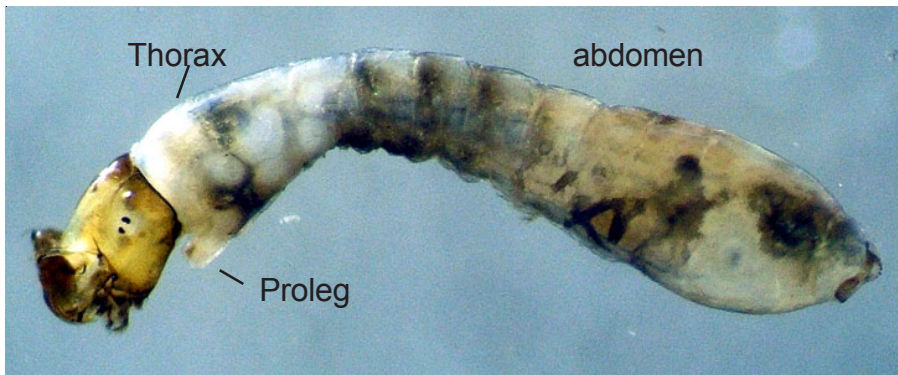
Family: Simuliidae

Characteristics

Larvae: 1) Head sclerotized (hardened), with 2 distinct fan-like mouthparts (labral fans)
2) First thoracic segment with one proleg 3) Last one third of body enlarged giving a bulbous appearance to the abdomen 4) Posterior end with retractable gills and a ring of tiny hooks

Pupae: Gills present, usually elongate filaments extending from the head; enclosed in a fibrous slipper shaped cocoon that attaches to the substrate

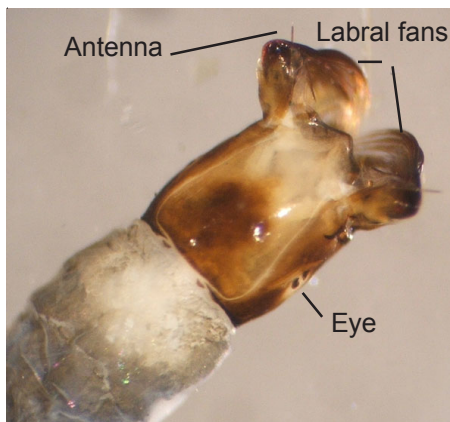
Illustrations



Posterior end



Dorsal view of head
Simulium sp.



Simulium pupa



Note: This family is extremely common and found at all our sites. *Simulium* is the only genus of Simuliidae collected in our samples to date.